

Experiences from the GRAFT Study

Cornelius Engelmann, MD, PhD
Campus Virchow Clinic
Hepatology & Gastroenterology
Charité – Universitätsmedizin Berlin

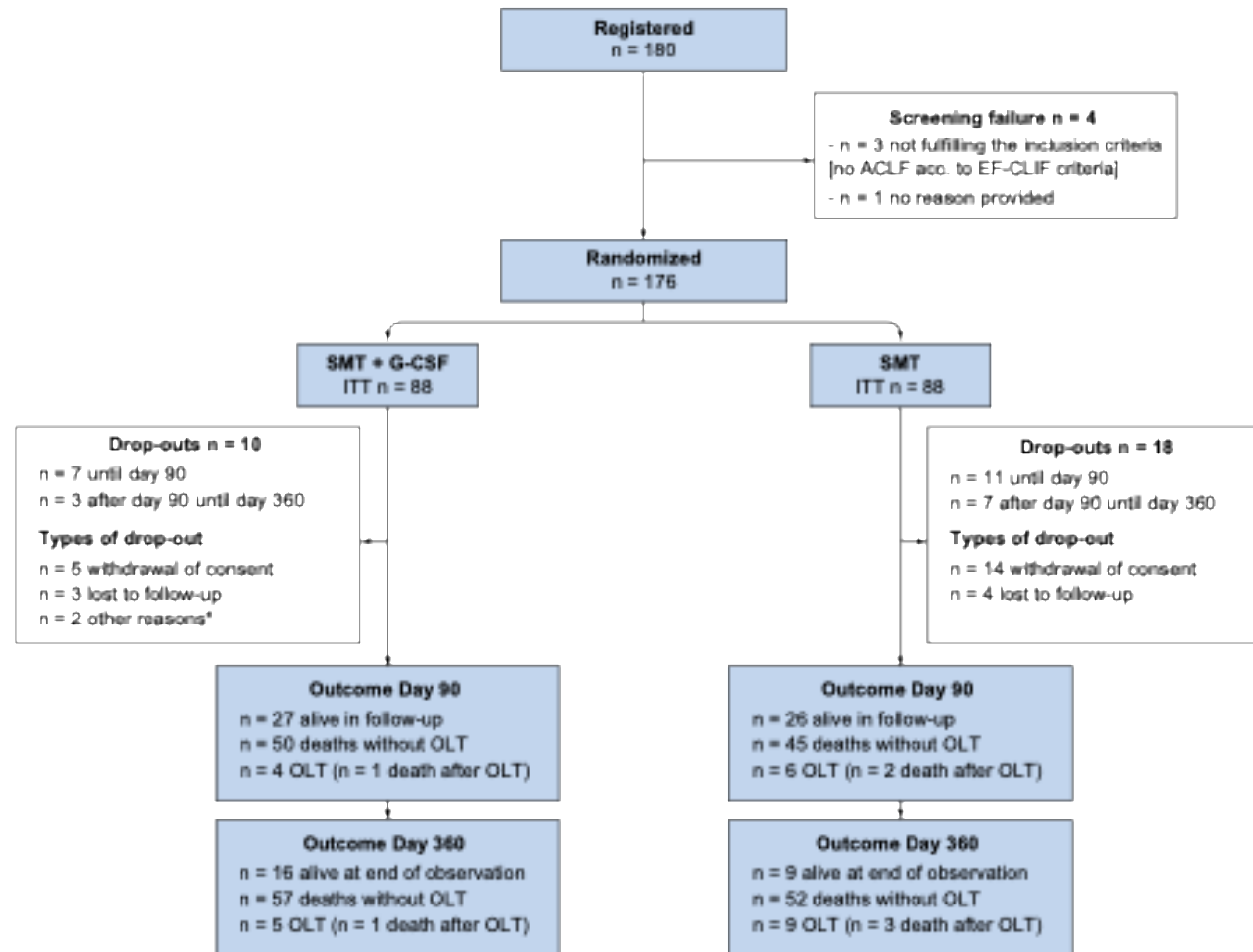
comelius.engelmann@charite.de

Research Article
Cirrhosis and Liver Failure

JOURNAL
OF HEPATOLOGY

Granulocyte-colony stimulating factor (G-CSF) to treat acute-on-chronic liver failure: A multicenter randomized trial (GRAFT study)

GRAFT – Consort Flow Chart



Challenges

- Timing of intervention — aligned with disease phase
- Disease complexity — tailor in- and exclusion criteria to organ failure type, precipitator, and severity grade
- Disease dynamics — rapid progression risks futile intervention, while rapid resolution risks unnecessary intervention
- Intervention complexity — kept to a minimum
- Study protocol complexity — reduced, including sample collection procedures
- ACLF definition and severity grading — ensured accurate, standardized reporting by investigators